

SKILL LEVEL

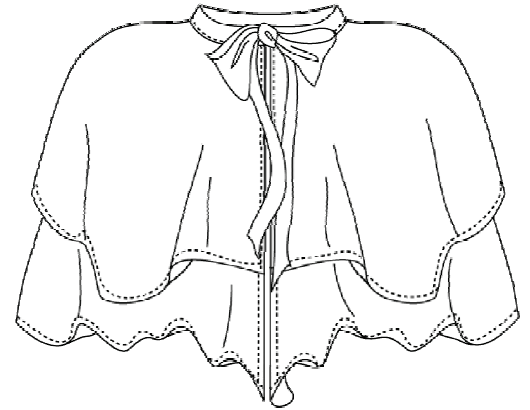


BEGINNER

multisized
pattern with
sizes
XS-S-M-L-XL
all on one
pattern

www.hotpatterns.comtm
patterns so hot they're smokin'...

HotPatterns & fabric.com exclusive download
Wicked Witch Capelet



Bubble, bubble, toile & trouble, make this capelet at the double! Brew up your very own brand of Hallowe'en magic in this chic little cover-up, designed for sheer or semi-sheer fabrics like chiffon, organza, georgette, or lace... or try a drape-y t-shirt knit for a totally modern look. Double-layered, unfitted capelet is made up of two offset squares joined at the neckline, which is finished and closed with a ribbon tie. Wear this wickedly pretty capelet as a fabulous cover-up over your favorite party or Hallowe'en outfit ...trick or treat, indeed!

exclusive free download wicked witch capelet instructions page 1 of 1

SEAM ALLOWANCES & OTHER INFO

Seam allowance at the neckline are 3/8" or 1cm; the hems can be finished with a narrow rolled hem or left raw.

Skills needed include: applying a ribbon tie.

ABOUT THIS STYLE

This is probably the easiest piece you'll ever make.

Seriously.

This capelet is simply two squares of fabric with the neckholes cut out, offset on the diagonal and finished at the neck with a ribbon tie.

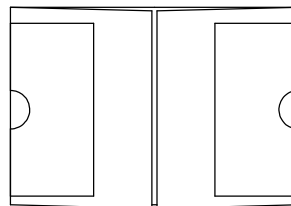
Now OF COURSE you're not going to make & fit a muslin for this...just go ahead and get cracking!

FABRIC & NOTIONS REQUIRED

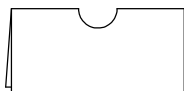
You need around 5/8 yard or 30 cm of 60"/150cm wide fabric; you'll also need 1 1/2 yard or xxcm of 2" or 5cm wide satin bias binding...this is often sold as blanket bias binding.

SUGGESTED CUTTING LAYOUT FOR THE CAPELET

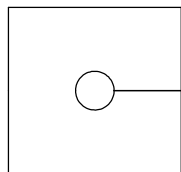
fold the fabric in half with both selvages towards the middle for this layout...



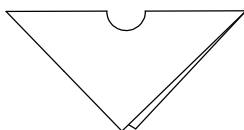
- 1 Start by folding one square in half, like this...



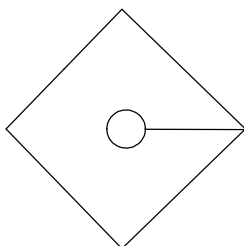
...and slit it open along the fold, so it looks like this...



- 2 Fold the remaining square in half diagonally, like this...

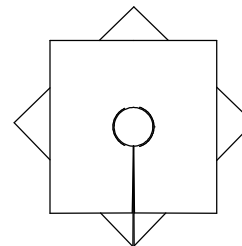


...and slit it open along the fold, so it looks like this...



- 3 If you wish, work a narrow hem around all the straight edges on both squares...or you can (of course!) leave the edges raw

- 4 Align the opening slits, then baste the squares together at the neckline.



- 5 Bind the neckine with the satin bias...when you get to the ends of the neckline, topstitch the folded edges of the binding together to create the ribbon ties.



C'est fini! We did say this was easy...

SIZE XL (sizes 24 & 26)

SIZE L (sizes 20 & 22)

SIZE M (sizes 14, 16 & 18)

SIZE S (sizes 10 & 12)

SIZE XS (sizes 6 & 8)

Hot Patterns & fabric

exclusive free download

wicked witch capelet

front & back

cut 1 pair on fold in fabric

SIZE XL (sizes 24 & 26)

SIZE L (sizes 20 & 22)

SIZE M (sizes 14, 16 & 18)

SIZE S (sizes 10 & 12)

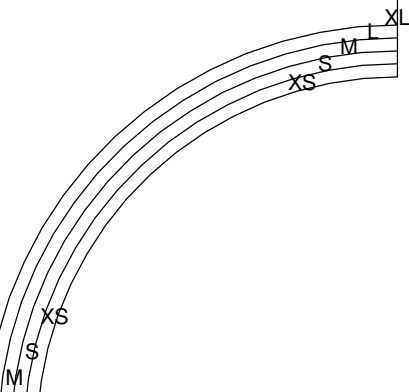
SIZE XS (sizes 6 & 8)

c.com

d

ic

FOLD



L XL M S XS

FOLD